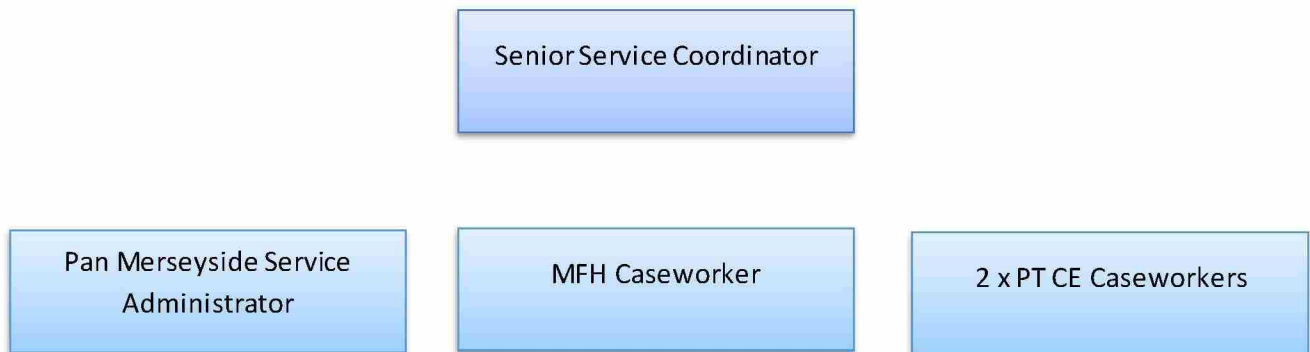


## St Helens Missing & Child Exploitation Structure



St Helens Missing from Home & Child Exploitation service is overseen by a Senior Service Coordinator, who manages the Missing from Home Caseworker and 2 part time Child Exploitation Case Workers. The Pan Merseyside Child Exploitation service also adds additional value to the service with an extra child exploitation caseworker who will support with direct work, training and group work.

The service structure also includes 1 x full time administrator who is responsible for inputting missing incidents onto Catch22 systems, business administration, and supporting the Senior Service Coordinator in providing data for reports and finances. Catch22 also provide placements for student social workers who support the service completing return home interviews, delivering group work and supporting young people through 1:1 work.