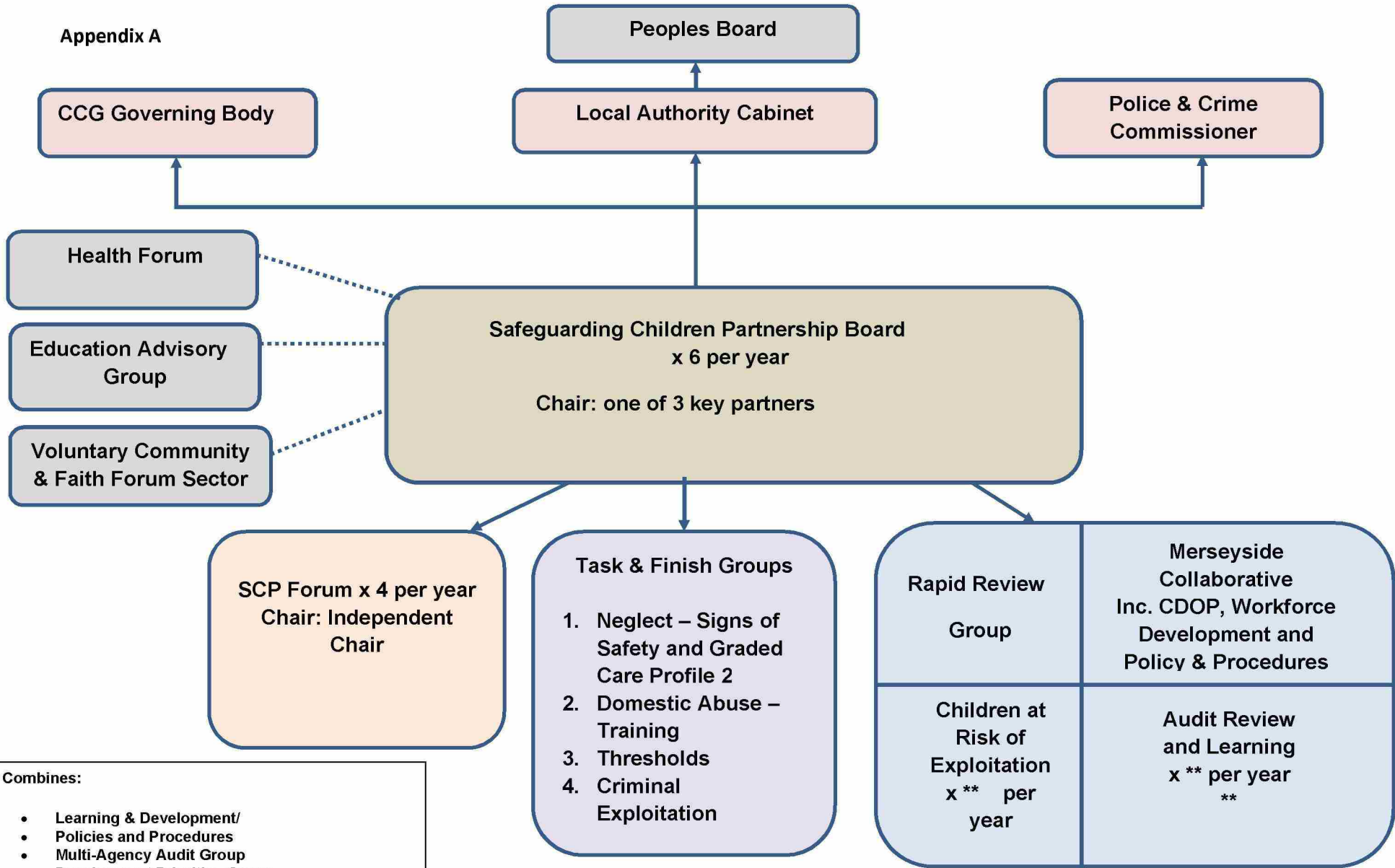


**Outline Model of Multi-Agency
Arrangements to Safeguard Children 2019
For St Helens Safeguarding Children
Partnership**

VERSION 4 21.02.19

Appendix A



**** Combines:**

- Learning & Development/ Policies and Procedures
- Multi-Agency Audit Group
- Development Priorities Group

(25 x Core Members consisting of Safeguarding Leads / Managers)

Appendix B: Relevant Agencies

- St Helens Local Authority (Peoples services)
- Merseyside Police
- Clinical Commissioning Group
- Primary and Secondary schools including academies, alternative provision (training providers) and Independent schools
- St Helens College and Carmel 6th Form College
- Children's Centres
- Childcare Providers and Nurseries
- CDOP
- NHS England
- Adult Social Services
- All local Housing Providers
- St Helens and Knowsley Teaching Hospital NHS Trust
- Youth Justice Service
- National Probation Service
- Merseyside Community Rehabilitation Company
- Border Force and Immigration Services
- British Transport Police
- Merseyside Fire and Rescue Service
- Merseyside Ambulance Service
- CAFCASS
- Early Help/ St Helens Local Authority Targeted Services
- Children's Social Care
- St Helens Local Authority Children's Safeguarding Unit
- All General Practitioners operating within St Helens
- Voluntary, Community and Faith Sector within St Helens
- NSPCC