

dlaway Association will join Groundwork Trust volunteers for a clean-up job in the Norden area today.

They will be clearing a bridleway path which runs from Bagslate Moor Road to Rochdale Golf Club.

Extra volunteers would be welcome, and should be at the site at 11am.

Tomorrow, association members will hold a protest ride (2pm) along Crimble Lane, Bamford, to oppose a plan to turn a nearby field into a car park.

Bamford committee member, Mrs Ann Davenport, said: "We hope other riders will support us because Crimble Lane is important to our bridleway network, and the volume of traffic on it is already far too heavy for the safety of horses and riders."

DPA

Sex-charge remand

RODERICK Hilton, aged 25, of Bamford, was remanded on conditional bail until 7 December by Rochdale magistrates on Wednesday.

He denied indecently assaulting a 15-year-old boy and was ordered to live at his home address and stay away from the youth. An order was made preventing identification of the teenager.

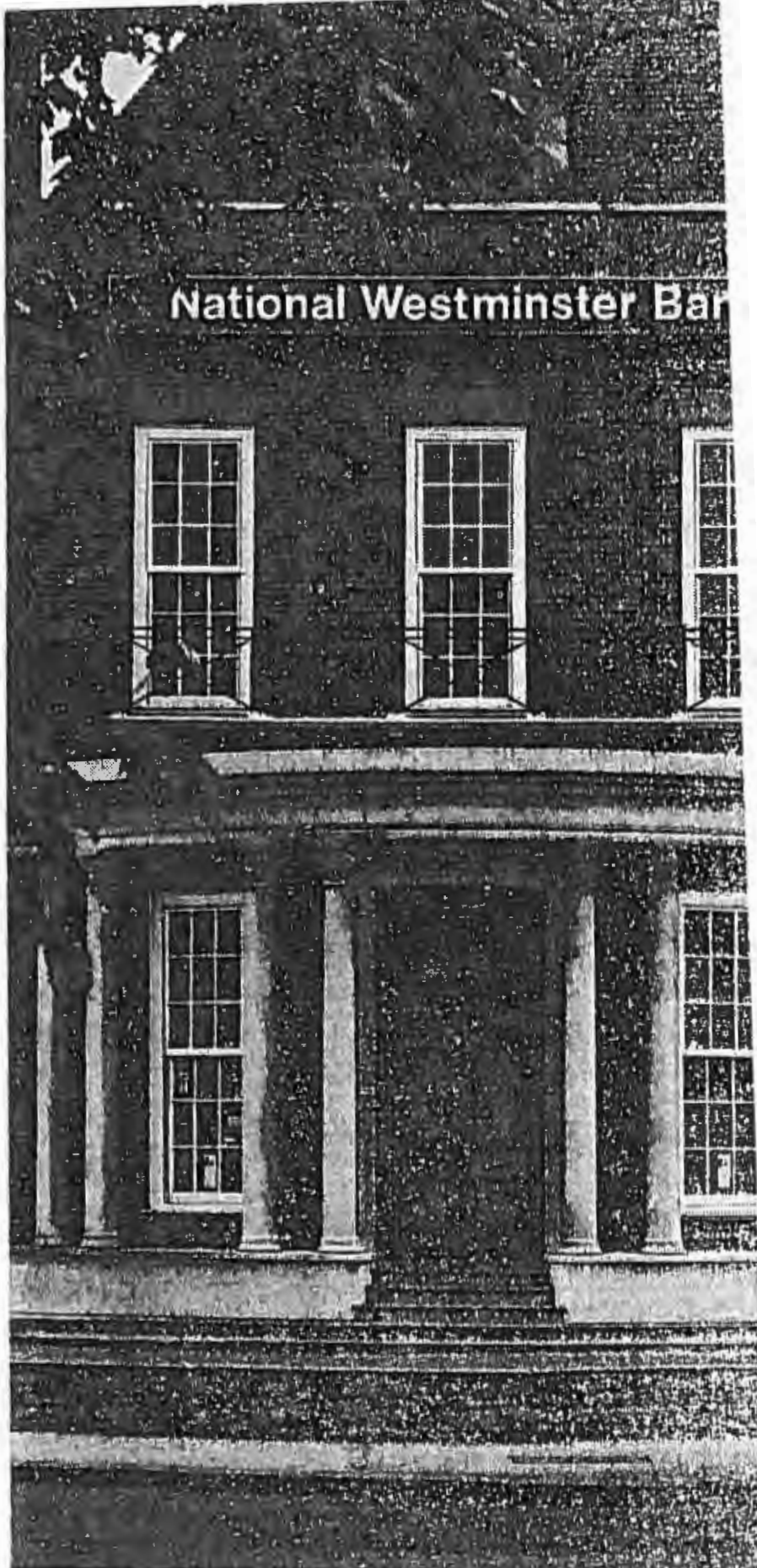
Flower 'show'

THE demonstrator at the monthly meeting of Bamford Flower and Garden Club at Rochdale Rugby Club was Mrs Elizabeth Mays, of Preston.

Her arrangements were entitled, *Paraphernalia*, and included the use of a Victorian doll, a small antique chair, a large piece of Bogwood and an Argentinian cacti vase along with Singapore orchids and exotic Gerbera.

She was thanked by Mrs Jean Mair.

The annual meeting is on 14 November and committee nominations can be sent to the chairman, Mrs Diane Cornforth.



*This offer does not apply to the NatWest Fixed Rate Mortgage. With our credit details for mortgage loans can be obtained from the above address or from NatWest through National Westminster Insurance Services Limited, whose investment business is regulated by the Securities and Investments Board. Mortgage loans are subject to a majority security and insurance required. EXAMPLE: A couple (male and female) both over-25s aged 25 applying to us for an endowment mortgage of £45,000, premium of £5770 (with **14% discount and Low Start endowment mortgage, monthly payments are reduced by £75.83 in the first year - total annual saving of £512.56). Total amount payable £108,515.90. Calculated to include £88.10 valuation fee and legal fee of £100.00 and a Mortgage Insurance fee.

PLEASE NOTE: YOUR HOME IS AT RISK IF YOU DO NOT KEEP UP REPAYMENTS